



c360 Field Level Security for Microsoft Dynamics CRM 4.0

Overview

c360 Field Level Security enhances the security capability of Microsoft CRM 4.0 by restricting access to CRM data on a field level basis. By using Field-Level Security, administrators will be able to restrict access to specific fields in CRM entities. The fields can be **disabled** (read-only), **forbidden** (deny access) or **hidden** (remove field from view) for any CRM **security role** in a **business unit** (or team), thus allowing dynamic field privilege access while maintaining the CRM security model.

The screenshot shows the 'Account: Activecycling' form in Microsoft Internet Explorer. The form is divided into several sections: General, Details, Administration, and Notes. The 'General' section is active and contains the following fields:

Account Name *	Activecycling	Main Phone	9986030351
Account Number	AC001	Other Phone	008 -55566 -55
Parent Account		Fax	
Primary Contact		Web Site	
Relationship Type	Consultant	E-mail	
Currency	US Dollar		

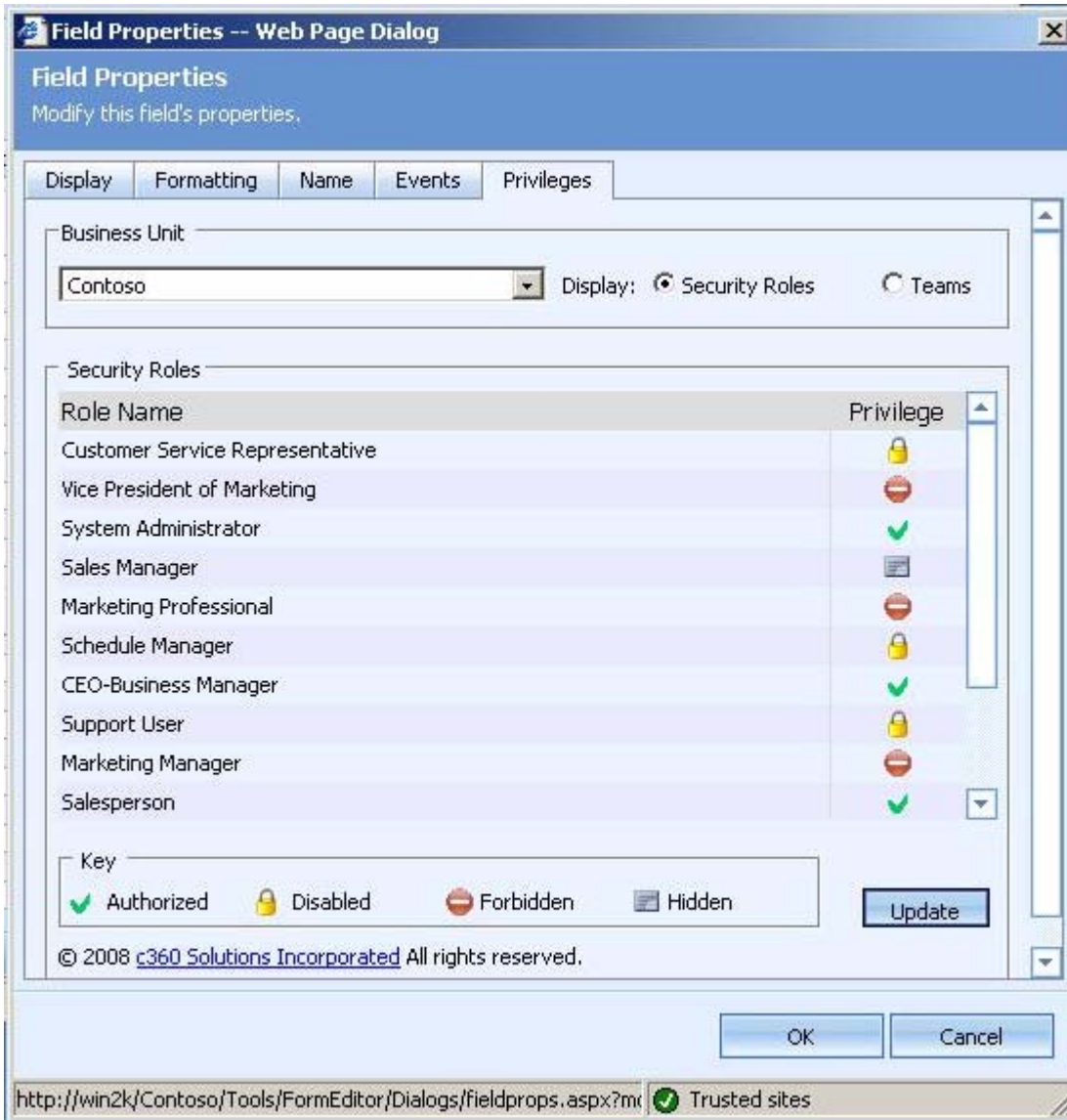
The 'Address' section contains the following fields:

Address Name		ZIP/Postal Code	
Street 1	Suite 100	Country/Region	USA
Street 2		Phone	
Street 3		Address Type	
City		Shipping Method	
State/Province		Freight Terms	

c360 Field Level Security allows you to restrict access to CRM data on a field level basis

Field-Level Security supports **all CRM field types** such as lookup, string, float, nvarchar, currency, datetime, memo fields while ensuring that fields are secured from all **areas of CRM** including entity forms, CRM Views, Advanced Find views, lookup views, Bulk Edit, Excel Export, Print pages, Form Assistant, Merge Forms.

By using c360 Field Level Security, you can define security privileges for any field in a CRM entity (including **custom entities**) and be sure that access is only available to the users who are allowed to see it.



Field Level Security is tightly integrated into CRM Settings area while maintaining the CRM security model

Evaluation Copies

Free evaluation copies of c360 Field Level Security can be obtained from c360 Solutions' web site. Evaluation copies come with a license key that provides unlimited usage with the sample installations ('Adventure Works Cycle', 'Adventure Works Cycle Demo') of Microsoft CRM. 15-day trial production evaluation license files are also available on the c360 web site.

Pricing

The cost of Field Level Security is \$95 per assigned Microsoft CRM license

Languages



All c360 products are available in multiple languages and can be easily translated into additional languages by simply making changes to the label and caption values found in a separate .XML document. Each product's Installation and Configuration guide provides detail on making language modifications. All product downloads include language files for multiple languages.

Licensing

The number of Field Level Security licenses must equal or exceed the number of assigned user licenses or Core Productivity Pack will not function for any user. For example, a company that has purchased 25 Microsoft CRM licenses, but has only 11 of them assigned to users needs 11 Field Level Security licenses.

Support, Upgrades and Enhancements

The list price of Field Level Security includes first year support, upgrades and enhancement per the c360 Solutions Software license agreement. After the first year, a support and enhancement plan can be purchased for 20% of the total cost of all Core Productivity Pack licenses.

c360 Partner Program

Authorized Microsoft CRM partners may inquire about the c360 partner program by visiting <http://www.c360.com/PartnerProgram.aspx>.

Information

For more information on c360 Field Level Security, contact c360 Solutions at:

c360 Solutions Incorporated
Two Concourse Parkway, Suite 800
Atlanta, GA 30328
(888) 929-3670
<http://www.c360.com>
Products@c360.com